

DWM D4DA4 200X AWM/D cool package

Specifications

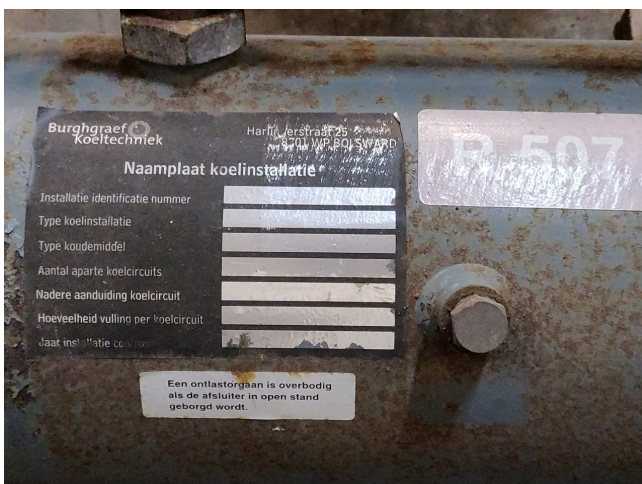
Brand	DWM
Type	D4DA4 200X AWM/D cool package
Refrigerant	Freon
kW at 0°C/+40°C	48.22
kW at -5°C/+40°C	39.94
kW at -10°C/+40°C	32.72
kW at -20°C/+40°C	21.08
kW at -30°C/+40°C	12.51
On steel base frame	✓
Liquid receiver	✓
m3 / h	56
Weight (kg) / Sizes (mm)	
Remarks	Our capacity table is based on Manufacturer spec. We would like to know which refrigerant is in your system
Weight in kg.	212
Stock	1



Description

Used DWM D4DA4 200X AWM/D cool package

Used cool package, including a semi hermetic reciprocating compressor DWM - Copeland D4DA-200X. For all the other specs (if available), see the picture of the manufacturer model plate or the attached pdf file. *Why choose for HOSBV? Were not only the largest used refrigeration specialist in Europe, but also, we deliver all equipment including an extensive test, warranty and industrial cleaning. *Optional we can also perform a new paint job and arrange the logistics.



Cooling capacity [kW]

t _c \ t _e	-35	-30	-25	-20	-15	-10	-5	0	5
20	14.15	18.32	23.33	29.27	36.24	44.33	53.65	64.29	76.35
25	12.90	16.89	21.64	27.26	33.85	41.49	50.30	60.36	71.78
30	11.64	15.43	19.93	25.23	31.42	38.61	46.89	56.37	67.13
35	10.38	13.97	18.20	23.17	28.96	35.69	43.44	52.32	62.42
40	-	12.51	16.46	21.08	26.47	32.72	39.94	48.22	57.65
45	-	11.03	14.71	18.98	23.95	29.73	36.40	44.06	52.82
50	-	9.56	12.94	16.86	21.41	26.70	32.81	39.86	47.93
55	-	8.10	11.18	14.73	18.85	23.64	29.19	35.61	42.99

Power input [kW]

t _c \ t _e	-35	-30	-25	-20	-15	-10	-5	0	5
20	6.07	6.74	7.41	8.03	8.51	8.80	8.81	8.49	7.76
25	6.21	6.98	7.78	8.55	9.22	9.71	9.97	9.91	9.47
30	6.30	7.14	8.06	8.96	9.80	10.49	10.97	11.16	11.01
35	6.34	7.25	8.26	9.30	10.29	11.16	11.85	12.28	12.39
40	-	7.33	8.43	9.57	10.69	11.73	12.62	13.27	13.63
45	-	7.40	8.56	9.80	11.05	12.24	13.30	14.17	14.77
50	-	7.48	8.69	10.01	11.37	12.70	13.93	14.99	15.81
55	-	7.59	8.84	10.23	11.68	13.13	14.51	15.75	16.78